





22 East Street, Fritwell, OX27 7QH

Guide Price £475,000

So much bright and light living space, both inside and out! A very complete family house in good order.

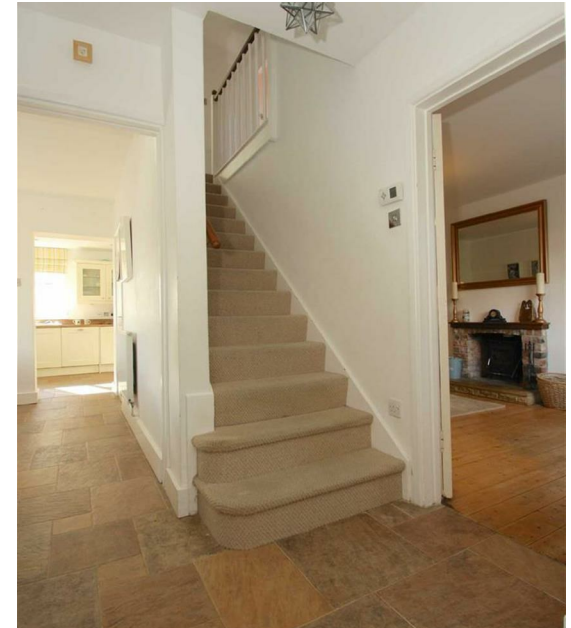
A large, extended semi with 4 bedrooms, 22 ft kitchen, 3 receptions and 100 ft garden. Good condition throughout, and set in the heart of a village with amenities including a shop/Post Office, and just a few yards from a great school. NO CHAIN.

Fritwell is a pretty village dating back to before the Norman Conquest. For a village of less than 500 inhabitants it is fortunate to have a post office and shop plus an award-winning butchers, a Village Hall for community and private events, two churches and a playing field with play and multi-sports areas for children, plus there is a great C of E first school - an unusual level of amenities for a village of this size. And within just a few mile radius there are masses of other amenities including several really lovely pubs. Its access is also excellent with the M40 nearby and Bicester rail station to London less than 6 miles away - with a service to Marylebone as fast as 40 minutes. This combined with its situation amid some of the prettiest countryside makes it a great place to live.

22 East Street is possibly the best mix of all things in this village. It's large, bright and light, has a great plot, fab location - and it's affordable! The extensions have provided greatly increased living space, but they've also added some individuality that elevate it above the original design. A canopy roof is not something normally found in a house of this type. Combine the accommodation with a really large garden and there's little like it available anywhere right now. ***NB our photos were taken several years ago, but apart from some decor changes it is as you will find it***

Walking through the front door, you'll immediately notice the entrance hall is wide and bright with stairs ahead. The tiled floor underfoot is attractive and tactile, and this carries on through the dining room and kitchen behind. On the right the living room is spacious but also cozy, with a timber floor and pretty fireplace both lovely features that exude character. To the left of the hall there is the first of two bathrooms, it is a good size and modern with a white suite. Behind it the dining room is a light and pleasant, ample for a table and chairs with space to spare, and there is a large cupboard under the stairs.

- Living room with fireplace
- Sun room with canopy roof
- Large, extended kitchen
- Spacious dining room
- Two modern bathrooms
- Utility/ cloak room
- Generous rear garden
- Off road parking
- Lovely village



22 East Street, Fritwell, OX27 7QH

Guide Price £475,000

Open to the rear the doorway leads into a kitchen that is extremely attractive. Units to three sides provide generous storage as well as ample work space on a wooden top. There is a dishwasher fitted along with a modern ceramic sink, and the main attraction is a large range-style cooker. This room has a broad breakfast table space, and behind it double doors open to the sun room hence the light is fantastic as is the view. With the canopy roof overhead this is a surprisingly smart room, continuing that wonderful view across the lengthy garden. Extra work space is catered for in the utility room to the side, which also doubles as a cloak room fitted with a wc.

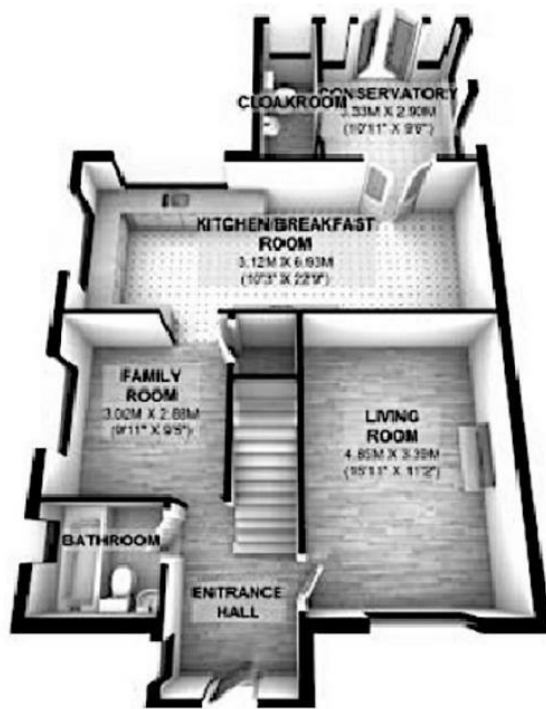
Upstairs, all rooms are attractive and well finished. The main is a generous double, with a wardrobe built in to the side, and a lovely timber floor. All further rooms are ample with even the smallest able to cater for a double bed with room to spare. Serving all four there is a modern bathroom, tastefully designed with a rather lovely mix of Art-Deco style tiling and contemporary fittings. This includes a thermostatic shower over the bath, plus an attractive and useful vanity unit.

Outside, the frontage is walled with a charming picket pedestrian gate leading up to the front door through a lawned garden flanked by a hedge. To the left the wall is open with a wide gravelled area for parking. Beyond it there is access down the side to the rear garden. This opens out onto a decked area on the left and then drops down to a gravelled seating area. Behind this the lawn is long and straight securely fenced in but also softly outlined with various plants and trees including a hedge to the left. And beyond the garden is a large paddock that stretches across to the rear gardens of the houses in the next door lane, hence it's a pleasantly open and bright view.

Mains water, drainage, oil c.h.
Cherwell District Council
Council Tax Band D
£2,164-10 p.a. 2023/24
Freehold







GROUND FLOOR
APPROX. 77.2 SQ. METRES (830.7 SQ. FEET)



FIRST FLOOR
APPROX. 51.5 SQ. METRES (548.9 SQ. FEET)

TOTAL AREA: APPROX. 128.2 SQ. METRES (1379.5 SQ. FEET)

Energy Efficiency Rating		Current	Potential
Very energy efficient - lower running costs			
(92 plus)	A		85
(81-91)	B		
(69-80)	C		
(55-68)	D	65	
(39-54)	E		
(21-38)	F		
(1-20)	G		
Not energy efficient - higher running costs			
England & Wales		EU Directive 2002/91/EC	

to discuss this property or to arrange a viewing please call, or drop us a line interested@cridlands.co.uk

01869 343600

<https://www.cridlands.co.uk>

Important Notice

These particulars are offered on the understanding that all negotiations are conducted through this company. Neither these particulars, nor oral representations, form part of any offer or contract and their accuracy cannot be guaranteed. Any floor plan provided is for representation purposes only, as defined by the RICS Code of Measuring Practice and whilst every attempt has been made to ensure their accuracy the measurements of windows, doors and rooms are approximate and should be used as such by prospective purchasers. Any services, systems and appliances mentioned have not been tested by us and we cannot verify that they are in working order.